



ADVANCE[®]

The Unrivalled Choice for Interior Cabinetry and Woodwork



Cabinet Refinishing Guide

Rejuvenate Most Surfaces with Advance®, Including:

- Wood, such as oak, cherry, maple, etc.
- Formica® and other laminates
- Fabricated woods

For best results, apply one coat of primer and at least one finish coat. Additional top coats may be desired depending on the substrate and the specific finish you wish to create.

With Its Hybrid Waterborne Alkyd Formula, Advance Provides:

- A hard, furniture-quality finish for enduring beauty
- Excellent flow and levelling
- Easy soap-and-water cleanup
- Gennex® Colour Technology
- Low VOC, even after tinting
- Availability in 3,500+ unmatched colours

Available Finishes:

- Pearl
- Semi-Gloss
- High Gloss

1. Getting Started

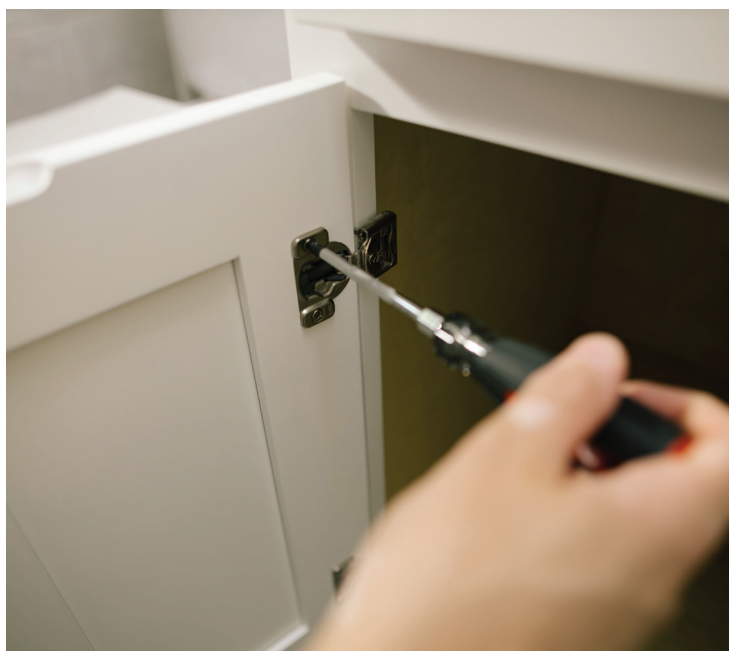
Application Conditions and Drying Time

The climate conditions of your workspace will affect Advance's dry time. As a waterborne alkyd, Advance requires proper ventilation, so be sure to open windows or run fans to keep the air moving to aid in drying. Avoid applying Advance in low temperatures or extremely humid environments. In optimal conditions, Advance will dry to the touch in 4 to 6 hours and can be recoated in approximately 16 hours.

Work Area Preparation

Remove cabinet doors, drawers, shelves, and all hardware to make the preparation and application processes as easy as possible. Using a pencil, label each piece in an inconspicuous location (where the hinge attaches) to avoid confusion during reinstallation.

If you are planning a spray application, cover countertops, appliances, and floor surfaces with paper or plastic, and create a fully enclosed workroom using plastic sheeting. Be sure to wear a respirator and protective eyewear, and use special ventilation units.



Remove cabinet doors, drawers, shelves, and all hardware. If using a spray application, cover all surfaces with paper or plastic sheeting.

2. Surface Preparation

Cleaning and Sanding

Before getting started, ensure the area is well ventilated. Wash the cabinet boxes and all pieces thoroughly so they are free of dirt, dust, grease, oil, soap, wax, and mildew. Use a small amount of degreaser* on a clean, lint-free rag and wipe down every surface you intend to paint. Use a scouring pad for tough-to-clean areas and allow ample time to dry. It's critical to clean before sanding, as sanding dirty surfaces can drive built-up grime deeper into the wood and jeopardize adhesion of your primer and top coats.

Sand all surfaces thoroughly with 150- to 220-grit sandpaper, working with the grain until the existing finish is rough. Use a sanding block or palm sander on flat surfaces, and use a small piece of sandpaper around decorative edges and round angles. Sand those areas gently by hand to avoid gouging.

If you will be relocating or replacing hardware, use sandable putty or wood filler to fill old screw holes. Most fillers shrink after application, so sand and reapply as needed.

Finally and most importantly, vacuum the cabinets and wipe with mineral spirits* or a tack cloth to remove all dust.

**Follow safety instructions on product label and wear personal protective equipment.*



Sand all surfaces and vacuum to remove all dust.

Priming

Proper primer selection and application are as important as your final coat. For best results on wood surfaces, use Fast-Sanding Primer (K057) tinted to the approximate finish coat colour. For laminate surfaces, use Fresh Start® High-Hiding All-Purpose Primer (K046). Do not use lacquer-based primers or undercoaters, as they can impede how Advance adheres to the surface of the cabinets.

Benjamin Moore offers a comprehensive selection of primers for every situation. If the cabinetry requires a specialty primer for extra adhesion or more robust stain blocking, ask your local Benjamin Moore® retailer.

After your primer has dried completely, use a 220-grit or finer sandpaper and sand all surfaces lightly. Focus closely on areas that may have drips or pools, such as inside corners and anywhere two flat areas meet.



Consult with your local retailer if your cabinets were previously stained as a stain-blocking primer may be required.

3. Application

Applying Advance Paint

SPRAY APPLICATION*

When spraying Advance, make sure you are in a well-ventilated area. We generally recommend using an HVLP spray gun with a fine-finish tip for the smoothest finish, although airless systems can also be used. For more information on spray specifications, please refer to the technical data sheet found on the Benjamin Moore website. Advance can be thinned with water up to 6% by volume if needed. Spray a thin, even coat on all surfaces, paying special attention to edges and corners. Keep a steady pace and maintain a wet edge as you complete each section.



Use an HVLP spray gun with a fine-finish tip for spray applications.

BRUSH APPLICATION*

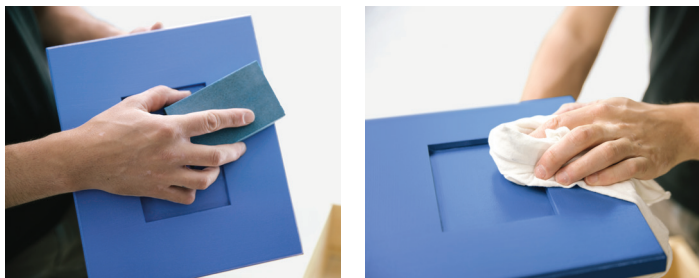
Use a premium Benjamin Moore nylon/polyester brush to apply Advance. Natural-bristle brushes absorb water and hinder even coverage. Work from top to bottom of each piece, first painting across the grain of wood surfaces, then tipping off in full, even strokes with the grain. Paint cabinet doors and other two-sided pieces in a horizontal position so Advance can level out completely. Make sure the paint is dry to the touch before turning pieces and painting the other side.



Using a nylon/polyester paintbrush, work from top to bottom, then in full strokes with the grain.

Sand Between Top Coats

It's important to sand between coats to ensure a smooth final finish. After your first coat has dried completely, sand all surfaces using fine-grit paper, taking extra care to smooth out any drips or pools that have formed in corners or elsewhere. Vacuum and wipe with denatured alcohol or tack cloth to remove all dust.



Sand lightly and wipe between top coats.

4. Final Steps

Return Cabinets to Service

Give the final coat several days to cure before reassembling the cabinets and returning to service. If you followed all the steps in this guide and all instructions on product labels, your final result should be an extremely smooth, furniture-like finish.

**Follow safety instructions on product label and wear personal protective equipment.*



Achieve a Flawless, Professional Furniture-Like Finish on Cabinets, Doors, and Trim



A paint's performance is critical when it comes to refinishing cabinets and all types of interior trim and woodwork. Advance Waterborne Alkyd Interior paint helps you achieve enduring beauty with a smooth, durable, flawless finish. But unlike conventional oil-based paints, Advance uses a low-VOC, waterborne alkyd formula that cleans up with soap and water.



Fast-Sanding Primer
Delivering Efficiency and
Professional-Quality Results



For further safety instructions, please refer to the SDS and TDS available on benjaminmoore.ca



We remain committed to the mission of our founder, Benjamin Moore, who started his paint company in 1883: to produce the highest-quality paints and finishes in the industry and deliver them directly to our customers through our nationwide network of knowledgeable, independently owned retailers.

FRONT COVER: WALLS: Silver Satin OC-26 CABINETS, TRIM & CEILING: White Dove OC-17

GATEFOLD: CABINETS: Evening Sky 833 DOOR, WALL & TRIM: Calm OC-22

INSIDE GATEFOLD: CABINETS: Blue Lapis 2067-40

Paint colours shown are not exact matches to the Benjamin Moore paints listed. Actual results may vary. Paint sampling is strongly recommended prior to use.

©2022, 2024 Benjamin Moore & Co., Limited. Advance, Benjamin Moore, Fresh Start, Gennex, and the triangle "M" symbol are registered trademarks of Benjamin Moore & Co., Limited. Printed in the USA.



M2455599CE

MG 11/24