



## BENEFITS

- Smooth application results in increased production.
- Enhanced hide (including clean, off-white colours) minimizes the number of coats.
- Great colour and sheen uniformity for seamless touch-up.
- Fast dry and recoat times result in getting more done in a day.
- A smooth, washable finish increases customer satisfaction.
- Zero-VOC, low-odour formula minimizes disruption.

FINISH	CODE	VEHICLE TYPE	VOLUME SOLIDS	COVERAGE <sup>1</sup>	DRY TIME <sup>2</sup>	VOC	MPI	MPI HIGH PERFORMANCE
Primer	F534	Acrylic	30 ± 2%	32.5-37.2 sq. m. (350-400 sq. ft.)	Touch: 1/2 hour Re-coat: 1-2 hours	0 VOC	50, 149*	-
Flat	F535	Proprietary Acrylic Copolymer	42 ± 2%		Touch: 1 hour Re-coat: 2-3 hours		53, 143*	-
Low Sheen-Eggshell	F537		41 ± 2%				44, 144*	138
Eggshell	F538		42 ± 2%		Touch: 2 hours Re-coat: 2-3 hours		52, 145*	139
Satin/Pearl	F545		41 ± 2%		Touch: 2 hours Re-coat: 4 hours		43, 146*	140
Semi-Gloss	F546		40 ± 2%				54, 147*	141

SDS and TDS are available at [benjaminmoore.ca](http://benjaminmoore.ca).

<sup>1</sup>Theoretical coverage (sq. m. [sq. ft.]) per 3.79 L at recommended film thickness. <sup>2</sup>Dry time at 25°C (77°F) at 50% RH.

\*MPI Institutional Low Odour/VOC

To find a representative in your area,  
visit [benjaminmoore.ca](http://benjaminmoore.ca) or call 1-866-708-9180.



# ULTRA SPEC<sup>®</sup> 500

PROFESSIONAL-QUALITY INTERIOR COATING



**OPTIMIZED & IMPROVED FOR  
GREATER PROFESSIONAL PERFORMANCE**

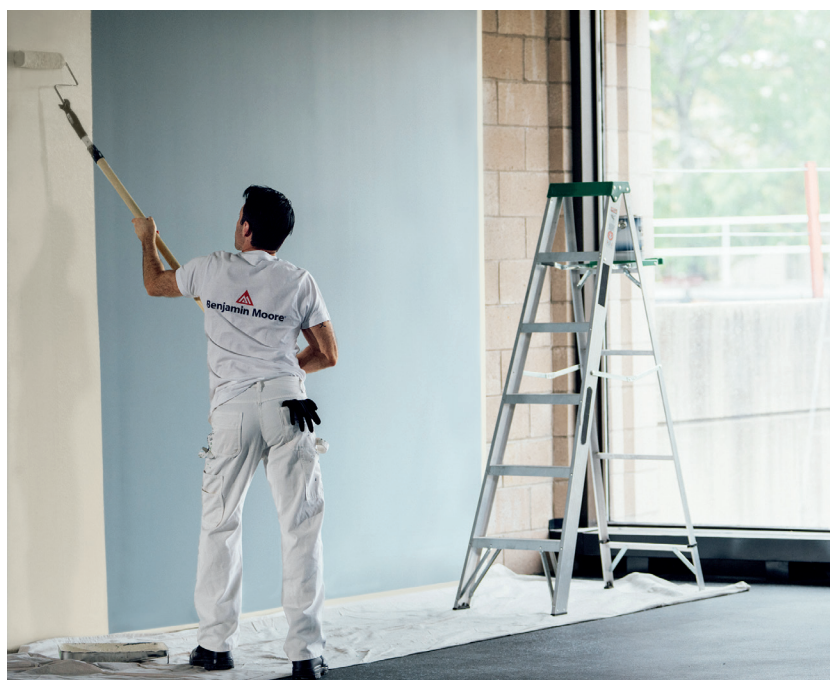


# Ultra Spec® 500 Interior paint delivers high-quality results for high-volume painting contractors

This zero-VOC, low-odour formula provides exceptional application properties, meets multiple MPI categories and offers quick dry and recoat times for same day return to service.

## Minimize the time it takes to get the job done

Ultra Spec® 500 has been optimized for maximum efficiency and performance. With the added improvements to the Ultra Spec 500 Interior line, professional painters, facility maintenance and property managers will continue to appreciate the exceptional application properties and performance that will reduce the time that it takes to get the job done right. When using Ultra Spec 500, painters can save time and money.

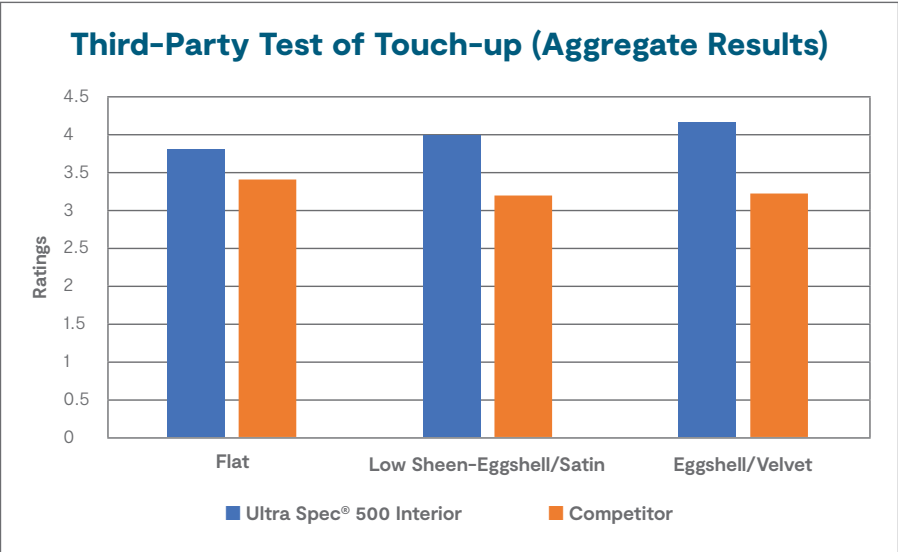


PRODUCT NAME & CODE	IMPROVEMENT/CHANGE
Ultra Spec® 500 Flat (F535)	A true flat, ideal for covering imperfections and flaws. Gloss rating (0 – 2.5 @ 85°) which delivers seamless touch-up, smooth application and blends seamlessly.
Ultra Spec® 500 Low Sheen-Eggshell (F537)	Excellent hide in pastel colours – clean off-white colours cover in fewer coats with great colour accuracy.
Ultra Spec® 500 Eggshell (F538)	Low Sheen-Eggshell (15 – 20 @ 85°) Eggshell (20 – 25 @ 85°)
Ultra Spec® 500 Satin/Pearl (F545)	Consistent gloss ratings to match industry expectations Satin/Pearl (20 – 35 @ 60°)
Ultra Spec® 500 Semi-Gloss (F546)	Semi-Gloss (45 – 55 @ 60°)

# In third-party blind tests, Ultra Spec 500 provided better touch-up and applied hide<sup>1</sup>

In an independent third-party test, Ultra Spec 500 delivered better touch-up properties than a leading competitor.

The test used paints purchased at local retail stores and the test method used was ASTM D7489 (natural light, two coats) for flat, low sheen-eggshell and eggshell. Ultra Spec 500 rated better overall in touch-up<sup>2</sup> (aggregate results).



	ULTRA SPEC® 500 INTERIOR	COMPETITOR
BETTER APPLIED HIDE <sup>1</sup>	✓	✗
BETTER TOUCH-UP <sup>2</sup>	✓	✗
QUICKER DRY TO RECOAT <sup>3</sup>	✓	✗
MEETS MPI HIGH PERFORMANCE CATEGORY <sup>4</sup>	✓	✗
ZERO-VOC	✓	✗

<sup>1</sup>Reflects aggregate third party test results based on ASTM D5150 Standard Test Method for Hiding of Architectural Paints for white and four colours for four sheens: Flat, Benjamin Moore® Low Sheen-Eggshell vs. a competitor's Satin, Benjamin Moore® Eggshell vs. a competitor's Velvet, and Semi-Gloss.

<sup>2</sup>Reflects aggregate third party results based on ASTM D7489 for the following three sheens: Flat, Benjamin Moore® Low Sheen-Eggshell vs. a competitor's Satin and Benjamin Moore® Eggshell vs. a competitor's Velvet.

<sup>3</sup>With the exception of Satin/Pearl and Semi-Gloss.

<sup>4</sup>With the exception of Flat.